



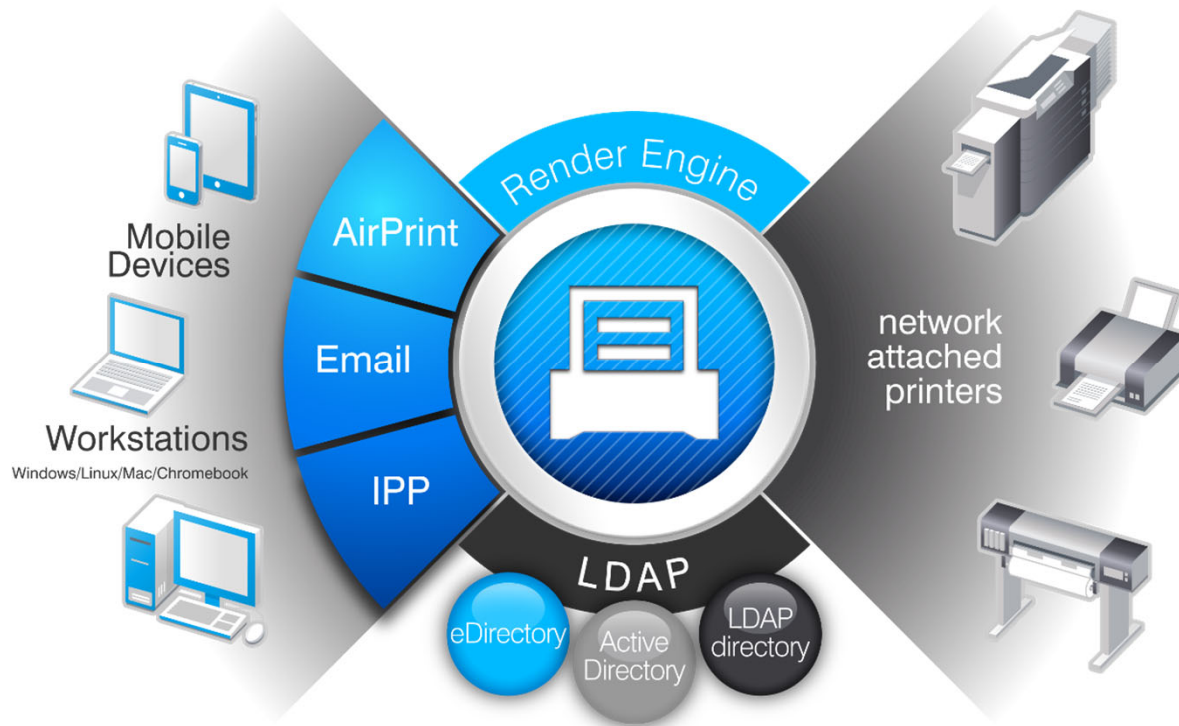
# iPrint Printing

Robin Redgrave

Solutions Consultant

[robin.redgrave@microfocus.com](mailto:robin.redgrave@microfocus.com)

# Micro Focus iPrint



# iPrint Appliance or iPrint Advanced for OES

- Same features in both (more or less)
  - Self Service driver install
  - Printing
  - Walk Up Printing
- iPrint Advanced is a separate pattern in OES
  - Not installed by default
- iPrint Advanced does not have
  - AD integration
  - AirPrint

# iPrint Licensing

- Desktop, Mobile and Enterprise licensing
  - Enterprise is both mobile and desktop (Includes Chromebook)
- With OES
  - Desktop only licenses
  - Licensed for both iPrint Advanced and Appliance
  - Only for OES licensed users whilst under maintenance

# iPrint Client

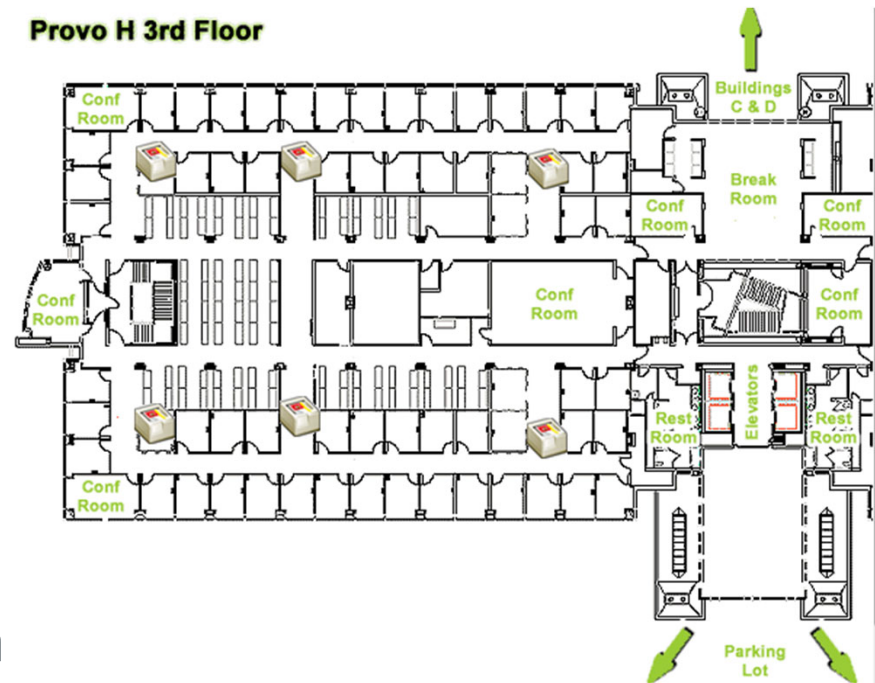
- iPrint client installed from the iprint portal
  - <https://<iprint server>>
  - In the future it will be available on the marketplace
    - <https://marketplace.microfocus.com/>
- Needed for
  - Driver installation
  - iPrint lite
  - Cashed credentials
  - IPP printing
  - Notifications

# Drivers

- Driver store
  - Upload drivers for each platform
- Driver Profile
  - Push down default driver settings
- Driver updates
  - Updated drivers can be pushed down to users that are using them

# Driver installation

- Installed from a map
  - Map tool to create is available
- Installed from the iPrint Portal
- iPrint client needs to be installed
- Print as normal from an application



# Printing with iPrint

- IPP Client Printing
  - Normal printing from an application
- iPrint lite
  - Print with right click in File Explorer
  - Print to any printer you are allowed to without driver install
- Email printing
  - Send an email to the printer



# Printing With iPrint

- QuickPrint
  - Web based printing
- Mobile printing
  - Printing from mobile devices Applications for iOS, Android
- Airprint
  - Appliance only, printer must support Airprint

# IPP Printing

- Standard printing from applications
  - Just as users usually print
- Printer driver installed from the iPrint portal
  - Or from Maps/menu
- Depending on security you may need to authenticate first
  - Can cache credentials

# iPrint-Lite – Context Menu based printing

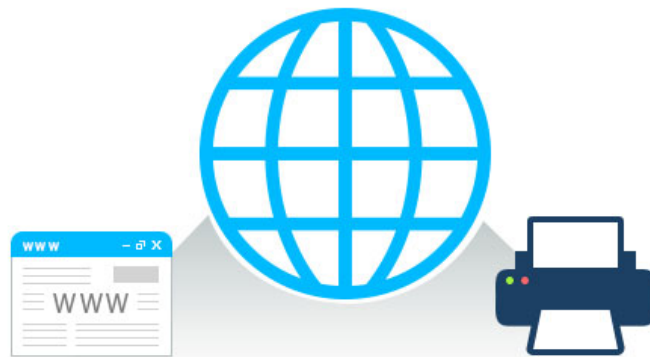
- Lightweight version of desktop printing
  - Just right click in File Explorer and print
- No need to install a printer driver
- Unlike traditional printing no need to open the document

# Email printing

- Print jobs can be submitted by email
  - The appliance polls regularly to pick up any new print jobs
  - Uses POP or IMAP against a mailbox
- A generic iPrint email address can be used
  - But the mail subject needs to specify which printer to print to
- Each printer can have an email address
  - Easier for the end users

# Web Printing with QuickPrint


No clients only a browser to print your documents




Client-less printing via web with QuickPrint

# QuickPrint

## QuickPrint

 non-secure

 Choose a file

Copies:

Page Size

Page Range  
 All  
 eg : 2-5

Page Orientation

Two Sided  
 Color

## Advantages

- Driver-less printing
- User can print from any platform with web browser
- ACL controlled and audit supported
- Administrator can enable/disable this feature Printer
- Capabilities are fetched dynamically

# Mobile Printing

- Android and iOS clients
  - Available from the store
- Can select printer from drop down
  - Or by using a QR code
- iOS devices can also use AirPrint

# AirPrint Printing

- Can expose printers as an AirPrint printer
  - Printer has to support AirPrint
  - iPrint checks if the printer supports it
    - Before giving the option
- Used by iOS devices to print
  - iPad and iPhone



# Renderer

- Rendering required when printing without printer driver
  - ie mobile, email, browser submission
- The Appliance has built in renderers
  - KeyView and LibreOffice
- But for best results the native application should be used
  - ie print from Word on Windows
- The renderer runs on Windows with Office/Adobe Acrobat

# Multiple Renderers

- This provides high availability
  - In case of failure
- Increases through put
  - Jobs are distributed among the nodes

# Walk up printing

- Users can print to a walk up queue
  - Print jobs are held until released to a specific printer
  - Deleted after a specified period
- Jobs can be released using
  - Card release
    - Optional smartphone Multi Factor Authentication with Advanced Authentication
  - Mobile phone
    - Manual selection of printer
    - Use a QR code attached to the printer
  - Web based release portal



[www.microfocus.com](http://www.microfocus.com)